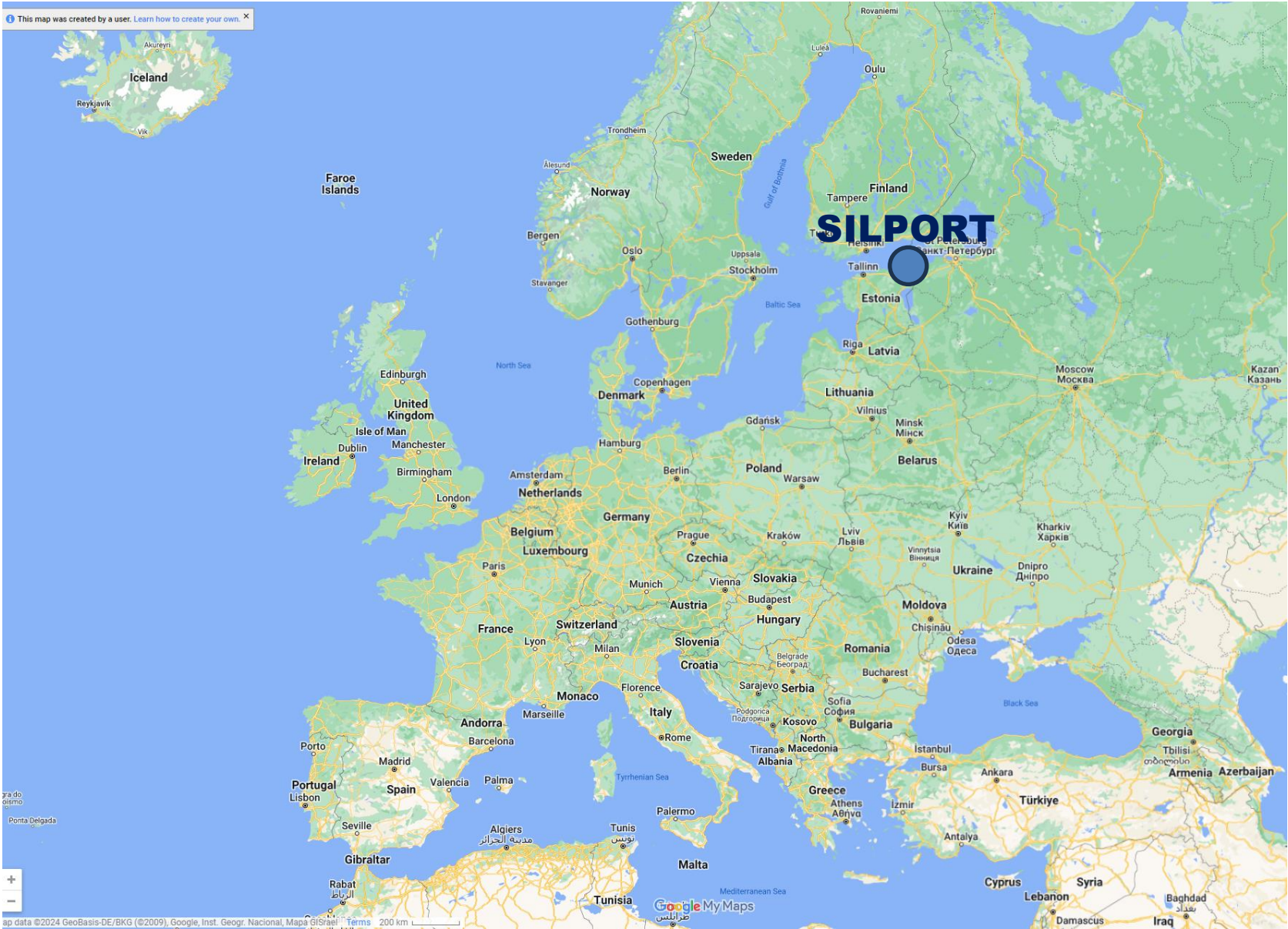


PORT OF SILLAMÄE- ESTONIAN PORT IN THE BALTIC SEA



SILPORT
Port of Sillamäe

LOCATION



PORT OF SILLAMÄE AT A GLANCE



750 ha
Port area



100%
Private capital,
Accelerated decision-making



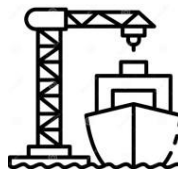
Free Zone
of control type 1



Industrial region of
Estonia



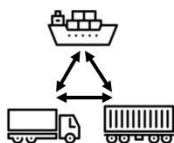
80 000 m²
indoor storage capacity



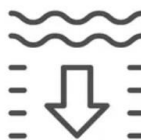
13 quays
total length 2,6 km



15 MLN TONS
Annual capacity



Integrated multi-modal
logistics



16 m
Depths up to

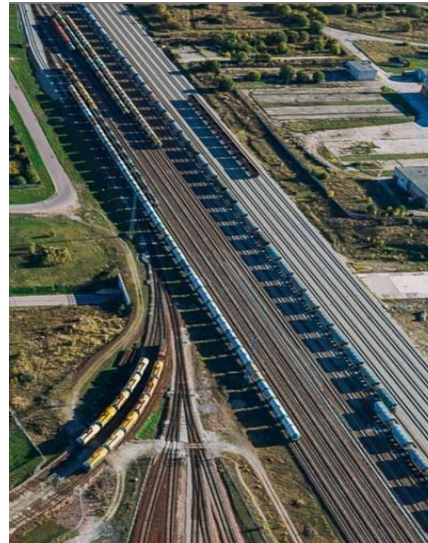


PORT OF SILLAMÄE

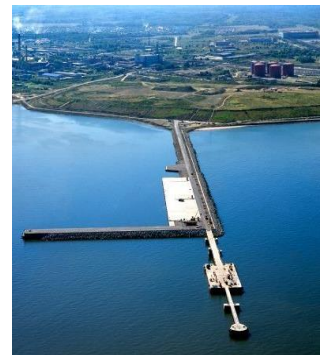
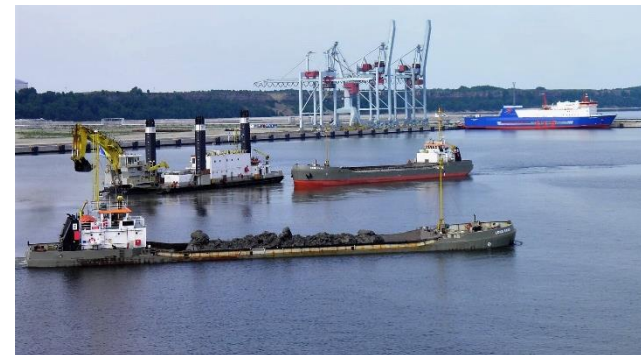


INFRASTRUCTURE

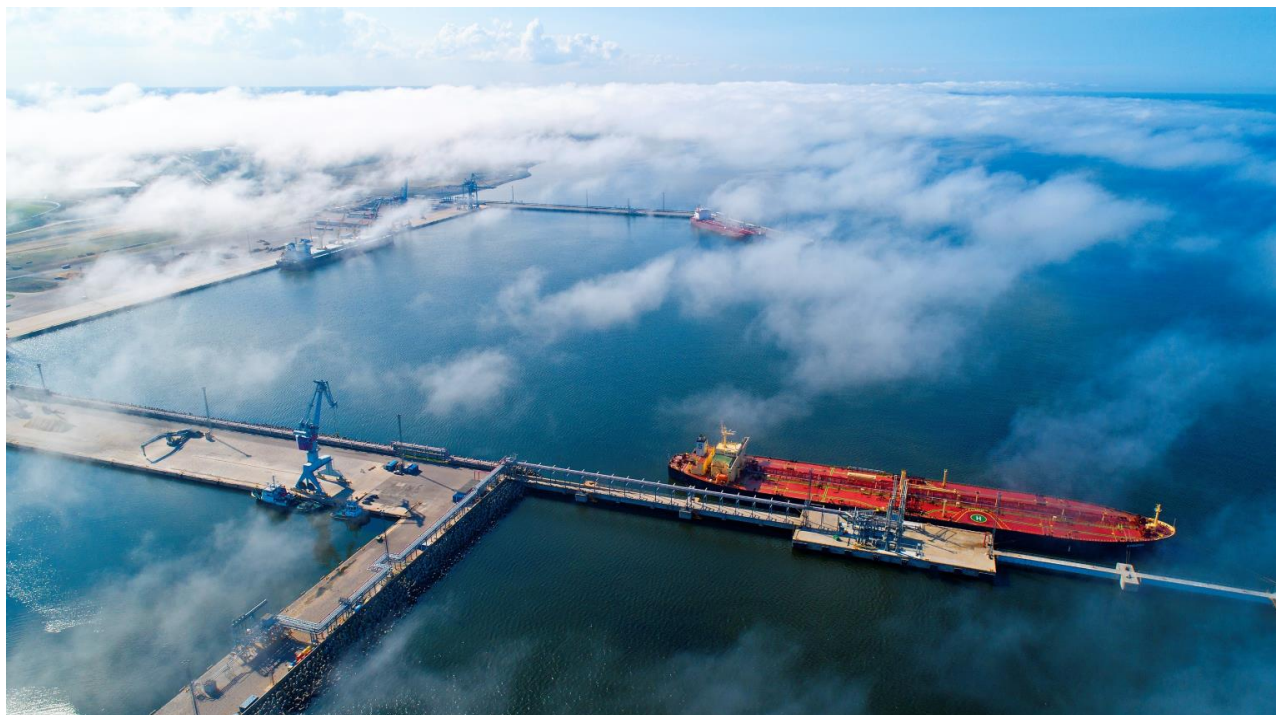
- ✓ 13 Quays, 2,6 km, depths up to 16 m
- ✓ 2 Railway stations, total length of railways 34 km, railway connection to Vaivara station (Estonian Railways)
- ✓ Roads network, 11 km, connection to Tallinn-Narva road
- ✓ 4 Terminals, covering diverse cargo mix
- ✓ Closed territory, main gate with Truckstop
- ✓ Support infrastructure electricity, heat, water etc. provided also by Silpower



PORT OF SILLAMÄE (2)



PORT OF SILLAMÄE (3)



PORT OF SILLAMÄE (4)



TERMINALS

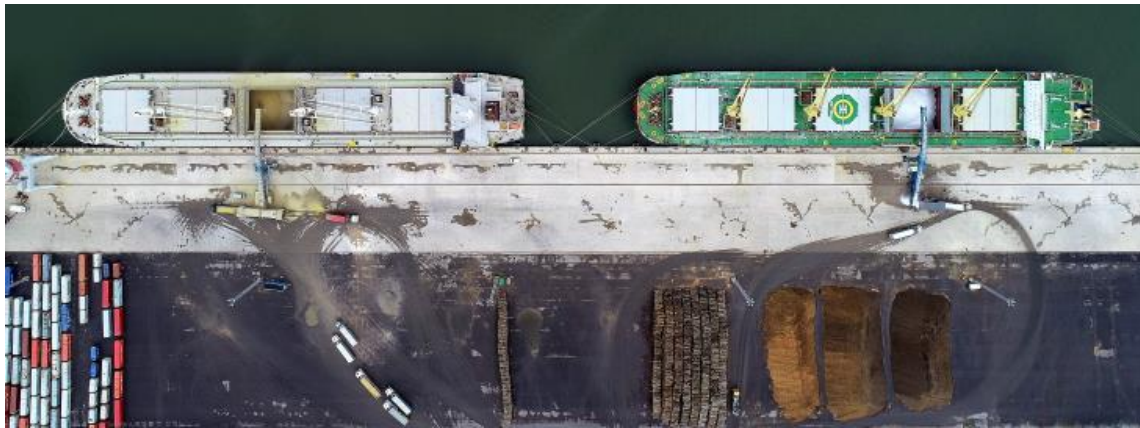
- ✓ Puma Energy Baltics AS, heavy oil products
- ✓ SilSteve, bulk and general cargo, containers, project cargo
- ✓ Eurochem, NH₃ and liquid chemicals
- ✓ DBT, NH₃ and liquid fertilizers



SILSTEVE



- ✓ Multifunctional, multimodal, sea, rail, road
- ✓ Bulk and general cargo, containers, project cargo
- ✓ Up to 112 ha of open storage
- ✓ 80 000 m² covered warehouses
- ✓ Various handling equipment
- ✓ Maintenance workshop



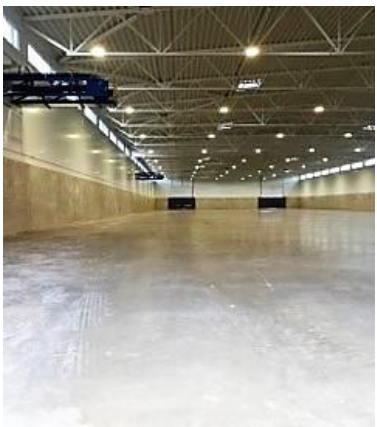
SILSTEVE (2)

- ✓ Handling capacity up to 5 Mt/yr
- ✓ STS, portal, hydraulic port cranes, shiploaders, container yard equipment, railway unloading stations, etc.



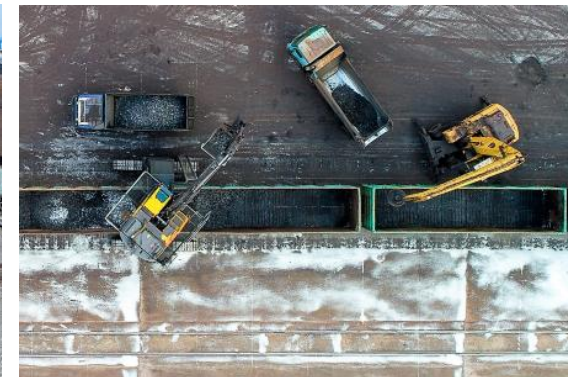
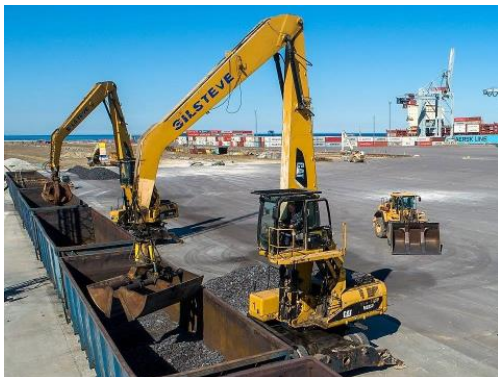
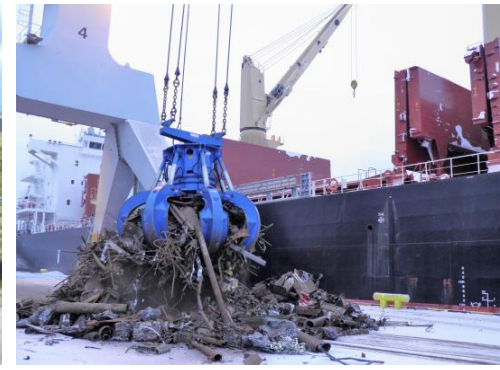
SILSTEVE (3)

- ✓ Warehouse complex 80 000 m²
- ✓ 3 Hopper wagon unloading stations
- ✓ 4 Shiploaders and bulk handling cranes
- ✓ Capacity up to 4 Mt/yr



SILSTEVE (4)

- ✓ Open storage bulk handling up to 5Mt/yr
- ✓ Vast storage areas
- ✓ Bulk mode STS, portal, hydraulic port cranes for unloading/loading, shiploaders
- ✓ Wagon unloaders
- ✓ Various attachments



SILSTEVE (5)

- ✓ Multimodal ro-ro and finished vehicles handling
- ✓ Oversize high and heavy project cargo handling



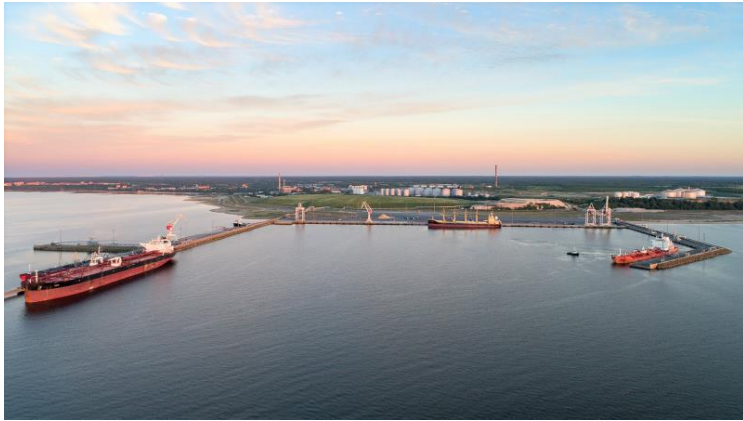
SILPOWER

- ✓ Heat and steam supplier, power generation
- ✓ District heating region
- ✓ Grid Region
- ✓ River and sea water recourses and management
- ✓ Supportive infrastructure for Silport



LOCATION IN INDUSTRIAL REGION

- ✓ Historical industrial area in Estonia
- ✓ Backbone of Estonia's energy sector
- ✓ Chemicals, metals and magnetic materials industry
- ✓ Turning green: carbon neutral renewable energy and circular material industries



MASTERPLAN OPPORTUNITIES





THANK YOU!



SILPORT
Port of Sillamäe